

ODYSSEY

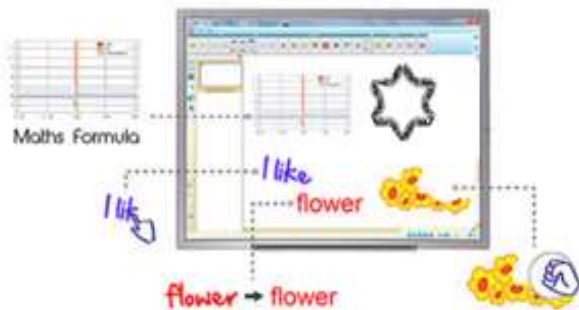


Odyssey Interactive Board

Odyssey P10 is the latest interactive whiteboard system that enhances interactive teaching and collaborative learning. This truly multi touch system combines pen or finger controlled unique durable surface. Ten-Touch system enables up to Ten users to work together on the interactive whiteboard.



- ✓ **10 Users Writing & Drawing in Different Colors** ^[New]
With this new feature up to ten users can individually write and draw with different colors at the same time. This enhances individual creativity and also encourages true collaborative learning.

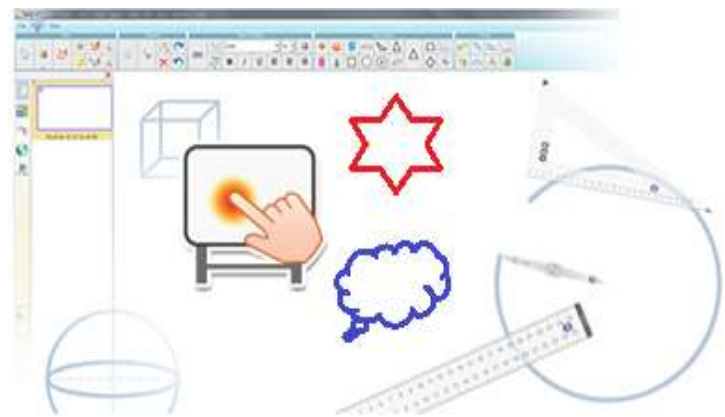


- ✓ **Writing & Erasing Simultaneously** ^[New]
This new feature allows user to write & erase at the same time. This enables presentation and collaboration run smoothly and efficiently

- ✓ **Integrated Interactive Solution**
Combines unique tools to provide an integrated solution to turn an ordinary classroom or meeting room into a complete interactive environment.

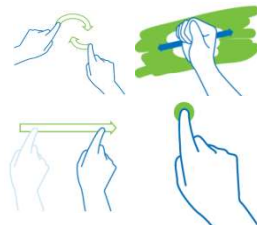
- ✓ **Support 3rd Parties Teaching Software**
The TEN -Touch Board system is compatible with other teaching & learning software that enables user to create a more interactive environment.

- ✓ **Wireless Connection - Less Cables, More Flexible!**
Just plug the USB Wireless Receiver to a USB port on your computer and you can connect with the TEN -Touch Board and enjoy the interactive experience.



- ✓ **Gesture Uni-tool - 4 functions**

- Touch gesture
- Erase
- Drag & Flick
- Pinch, Spread and Rotate



Size	82"	70"	84"	88"	95"
Multi Touch Detection	10 Points Detection (Finger Touch)				
Touch Technology	IR Optical Sensor		IR Detection		
Resolution	32768 x 32768				
Finger Touch Accuracy	(+/-) 1mm				
Touch Durability	Unlimited				
IWB Surface	Pre-painted Steel / Ceramic-steel (E3)				
Interface	USB 2.0 (HID Compliant) or Wireless (Optional Item)				
Operation OS	Windows 8/ 7/ 10/Vista/ XP; Linux; Mac				
Power Consumption	USB = 5V; Operating Current = < 250 mA				
Board Dimensions (L) x (H) x (D)	1660 x 1290 x 35	1480 x 1080 x 30	1692 x 1284 x 30	1815 x 1284 x 30	2060 x 1243 x 30
Win Requirements	<ul style="list-style-type: none"> • Windows 7/8/10/Vista (64 bit) • Processor: Quad-core Intel or AMD CPU • 4GB System RAM • 5GB free HDD space. • DirectX 9 compatible NVIDIA or AMD ATI video card with 1GB of RAM 				

OPTIONAL ACCESSORIES

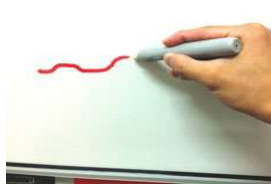
Document Camera



Interactive Response Kit



Interactive Pen - Tray



PICO - PC



Wireless Control Kit



Electric Mobile Stand



Document Camera HD



Face Plate VGA / HDMI



CONTACT US NOW

Warranty

- ✓ **2 Years Standard Warranty**
- ✓ **Extended Warranty Available**
- ✓ **Maintenance Contract Available**