



**MORE IMMERSIVE PROJECTION,
 LESS INTERFERENCE.**



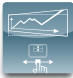



For smooth, uninterrupted presentations, look no further than Epson's series of short-throw projectors. With short-throw projection ability, glare or shadow interference will no longer be a hindrance. Enjoy significant cost-savings as well, with 10,000 hours of lamp life in eco-mode. With SMART Notebook® collaborative learning software* to allow educators to easily create engaging interactive lessons, Epson's short-throw projector series is your ideal choice.



EB-536Wi



EB-535W/525W/530/520

- 
 Short Throw
- 
 10,000 Hours Lamp Life in Eco Mode
- 
 Horizontal Keystone Adjuster*
- 
 Multi-PC Projection
- 
 HDMI
- 
 Wi-Fi

ENGINEERED FOR BUSINESS

<p>Superb Short-throw Performance A throw ratio of 0.48 reduces glare and shadow interference, creating seamless presentations.</p>	<p>Enhanced Interactivity Features* Simply plug-and-play to start writing on the screen with the interactive pen, even without a PC.</p>	<p>Eco-friendly and Cost-efficient Save costs and energy consumption with 10,000 hours of lamp life in eco-mode.</p>
---	--	--



* Applicable for EB-536Wi only

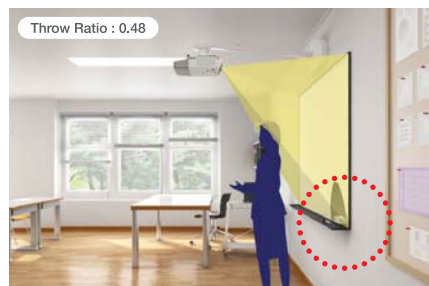
Project large screen sizes even at close range and make your presentations larger-than-life with Epson's short-throw projectors. Featuring versatile projection modes and flexible positioning, you can easily deliver wide projections with minimal shadow interference even within a limited space.



Superb Short-throw Performance

Impressive Screen Size at Close Range

Deliver uninterrupted presentations every time with Epson's short-throw projectors. This projector series boasts a throw ratio as low as 0.48, allowing you to project an 80-inch large screen from just 83cm away.



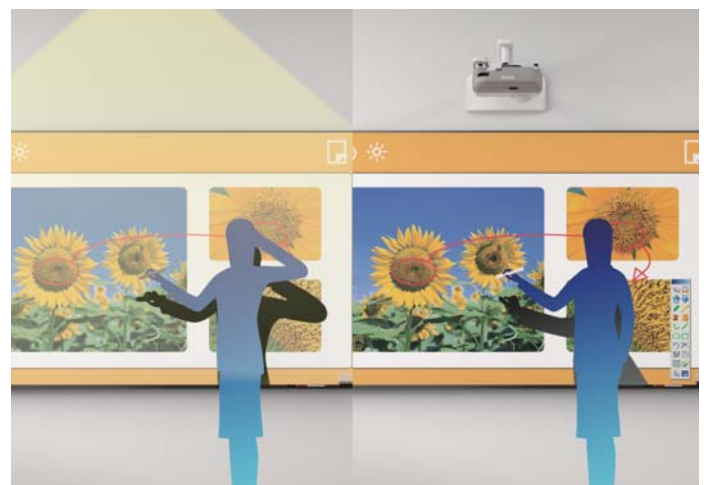
Epson's short-throw projector



Other projector

Reduced Shadow Interference & Minimised Glare

The short throw distance also significantly reduces glare on the presenter and shadow interference on the screen, making the viewing experience conducive and comfortable for everyone in the room.



Conventional projector with blinding glare on presenter's face

Epson's short-throw projector

Enhanced Interactivity Features*

Interactive Pen

Enliven your presentations with the projector's interactive function. The interactive pen provided effectively turns your screen into a large drawing board. You can freely annotate on projected content, making your presentations lively and highly engaging. The higher pen accuracy and response speed make drawing as instant as writing with a normal marker pen.

By connecting the projector to a PC via USB cable, you can use the interactive pen like a PC mouse to select and control elements on the screen for greater flexibility.



Two interactive pens can be used simultaneously for greater interactivity

PC-free Interactive Functionality

Write on the projector screen like a whiteboard, without a PC input source. With this original feature by Epson, you can annotate on screen without any PC connection to create compelling presentations. The PC-free Interactive mode also allows two people to write simultaneously, with two pens operating at the same time for greater interactivity.



On-screen Projector Operation

With on-screen projector operation, you'll be able to easily operate your projector even if the remote control is not close at hand. Perform basic projector operation functions such as power on, source change, volume adjustment and mute, simply by selecting the icons shown on the screen.



* Only applicable for EB-536Wi.

Extend your Interactive Reach

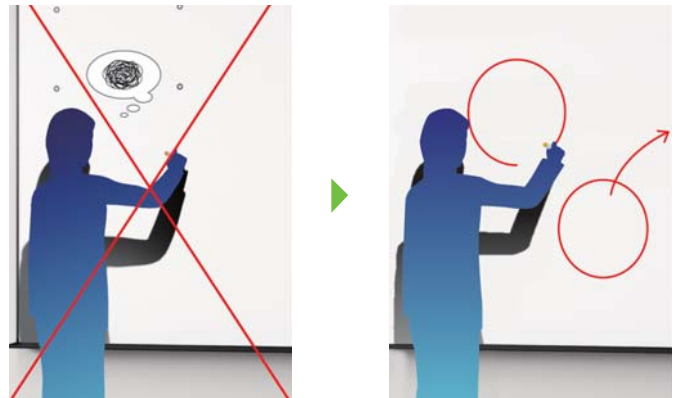
Get more out of your Interactive Pen with the Interactive Pen Extension**. With a longer pen, your interactive experience is enhanced as shadow interference is minimised even when the projector is placed on the table.



** Optional accessory

Ease of Set-up

Projector set-up is simply plug-and-play, with a one-time Auto Calibration and Auto Resolution Adjustment. No driver installation is required except for Mac OS users.



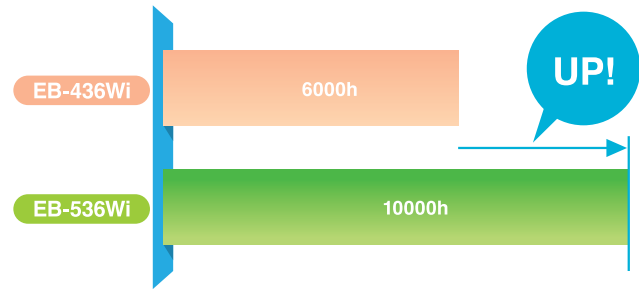
Calibration with interactive pen during setup can be skipped with the new auto calibration feature

Users can advance straight to use the interactive feature with a click of the button

Eco-friendly and Cost-efficient

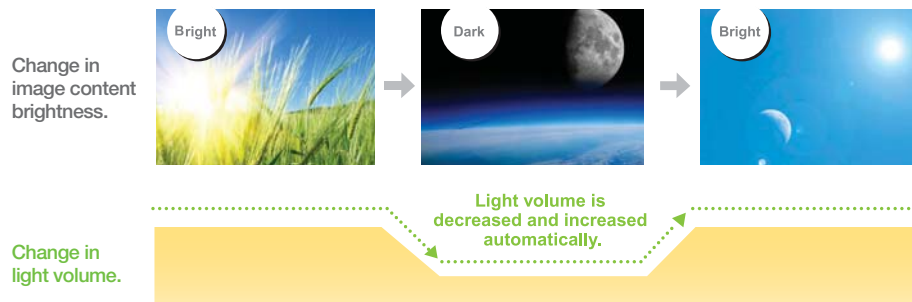
Longer Lamp Life

With a long lamp life of 10,000 hours in eco-mode, the frequency of costly lamp replacements is reduced, saving you time and money.



Light Optimiser

Save energy consumption and do your part for the environment with the eco-friendly Light Optimiser function. This feature automatically adjusts projection brightness according to image content brightness, giving you power and cost savings. This function can be turned on/off according to your preference.



Flexible Positioning

Effective Use of Space

Epson's short-throw projectors give you greater possibilities for all kinds of creative applications, even in areas with limited space. The projector can be mounted on a wall or set on a desktop and is effective on any surface, be it a flat wall, a whiteboard or even a chalkboard.

This means you can maximise the use of limited classroom or office space by turning any existing board into a projection surface.

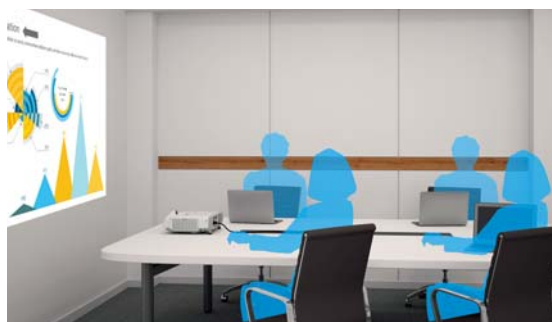
Despite the limited space, bright and large projections are still easily achievable.



Projection on a whiteboard



Paper pinned onto the whiteboard when the projector is switched off



Projection in meeting rooms with space constraint



Ease-of-Projection*

The Horizontal Keystone Adjuster and Auto Vertical Keystone features allow you to quickly and intuitively correct any projection image slant due to projector placement angle. Calibration for interactivity is also quick and easy. Simply press the Auto Calibration button for 3 seconds and you can begin to use the interactive pens for your presentation right away.



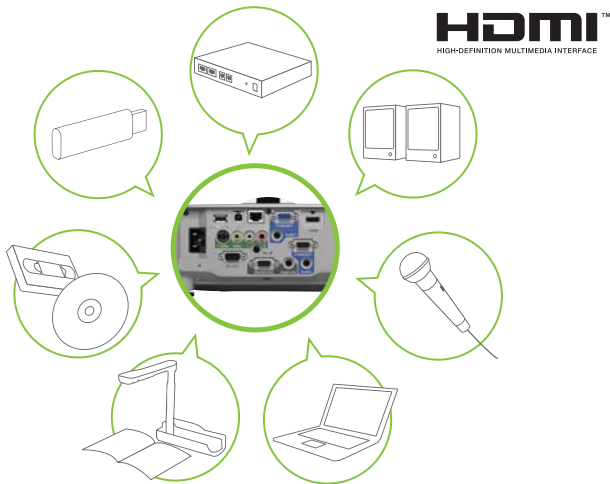
* Only applicable for EB-536Wi.

** Carrying case is sold separately

Wide Range of Connectivity

Full Compatibility

Advanced connectivity features mean convenient and hassle-free projections of your presentations. With wide-ranging interfaces, these projectors not only correspond with multiple conventional analogue sources, they are also compatible with HDMI input.

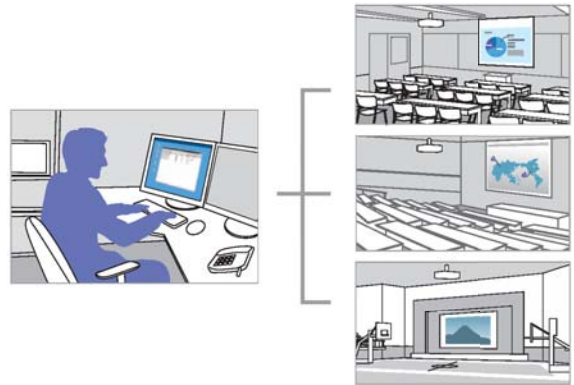


EasyMP Network Projection

The EasyMP Network Projection enables users to configure both wired and wireless connections with high-quality audio output and conduct meetings simultaneously in up to four different locations.

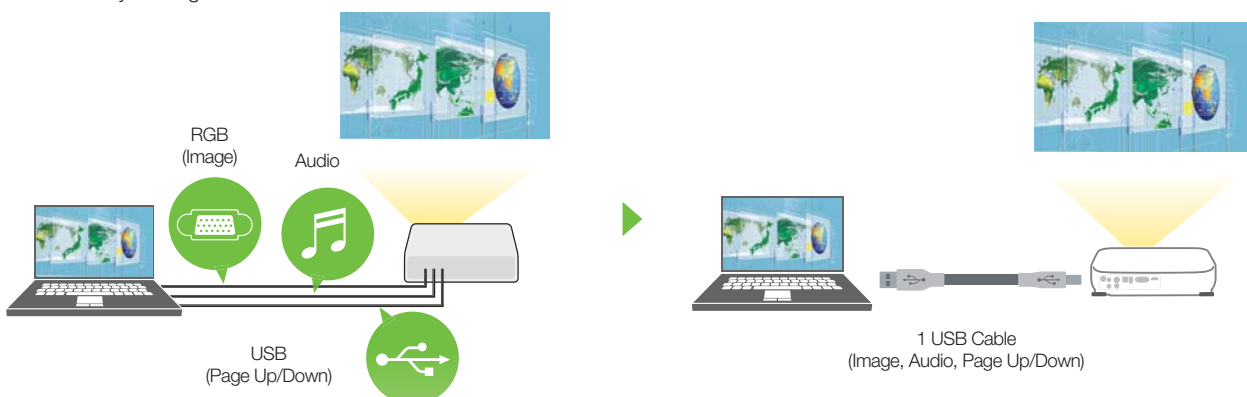
EasyMP Monitor

The EasyMP Monitor lets you efficiently monitor and configure multiple networked projectors from a single PC. You also have the ability to broadcast messages to all projectors for announcements or emergencies.



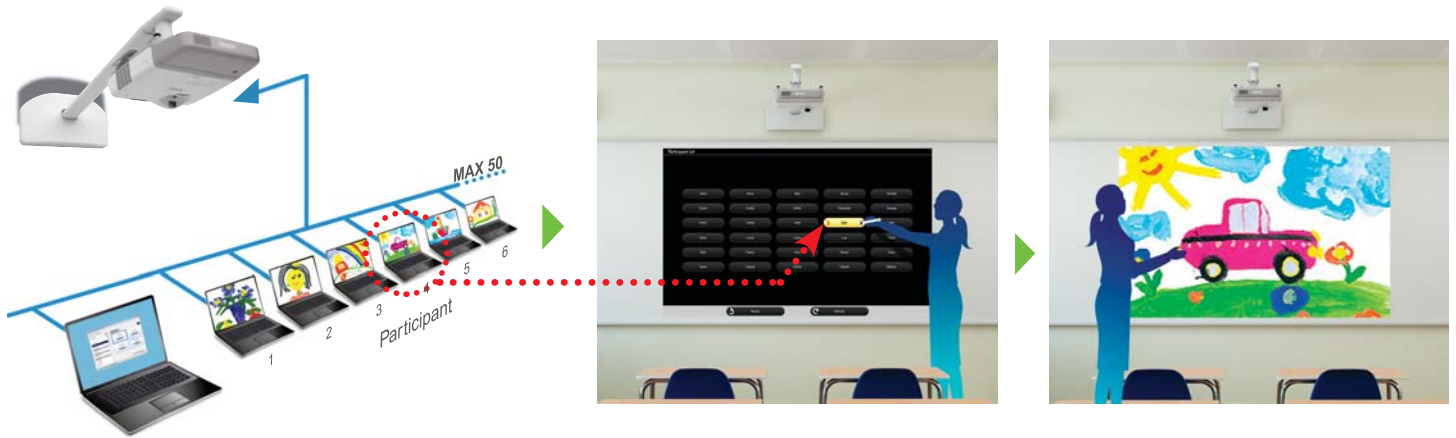
USB 3-in-1 Display

Image projection, sound transmission and mouse operation can all be conveniently carried out with a single USB connection, eliminating the hassle of separate and messy cabling.



Multi-PC Projection

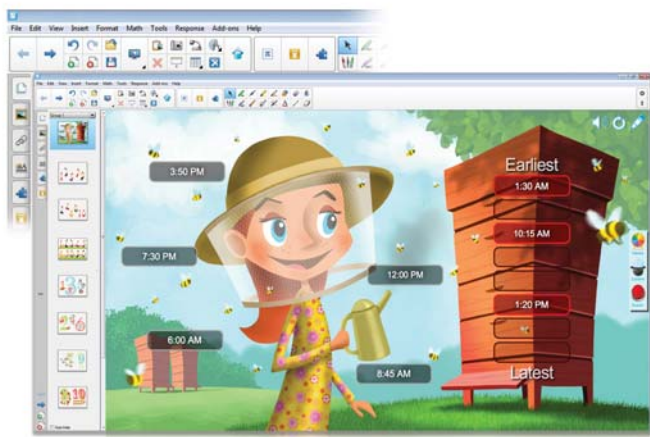
With the control of a host PC, up to 50 terminals can be connected via the multi-PC projection to a single projector. The host PC acts as a moderator, selecting media from up to four PCs or smart devices to be projected simultaneously. With the moderator function, you can maintain control and prevent tampering of what's projected on screen.



SMART Notebook® Software*

Easily create dynamic contents to deliver impactful interactive lessons and bring learning to life.

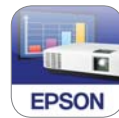
Featuring a host of design features, multimedia resources and customisable game-based activity templates, this collaborative learning software gives you all the tools you need to enrich your interactive classroom experience. With a variety of artistic pens, create attractive real-time drawings and annotations and add more colours to your lessons. What's more, teacher and student devices can be leveraged to drive discussion, assessment and content creation.



* Only applicable for EB-536Wi.

Epson iProjection*

With the iProjection application for both iOS and Android, wireless projection from a smart device is made possible. This feature supports various files and allows you to present your smartphone contents with ease. iProjection also corresponds with your smartphone's touch-screen operations, such as flicking to turn pages and pinching to zoom in or out.



* In iProjection, projector profile search, multi-screen display, distribution function, audio transfer, movie file transfer, interrupt connection disabling and encryption data transfer capabilities are not supported.

Eco Features

- Uses just 0.28W of power in standby mode
- Projector optics employ lead-free lenses
- Unpainted plastic housing reduces the environment impact
- The flame retardants used in the plastic housing do not contain chlorine or bromine
- Light Optimiser function helps to reduce power consumption usage.

Better Products for a Better Future™

For more information on Epson's environmental programmes, visit <http://global.epson.com/SR/environment>.

PARTNERS IN PERFECTION

Short-throw Wall Mount ELPMB45



Arm Length: 1,510mm
 Weight: approx. 11kg
 Maximum Load Capacity: 5.5kg
 Supported Projection Screen Size:
 66" - 110" (WXGA model)

Wireless LAN Adaptor ELPAP07



Supports 802.11 b/g/n connection
 Compatible with all Epson wireless-enabled projectors

Desktop Document Camera ELPDC21

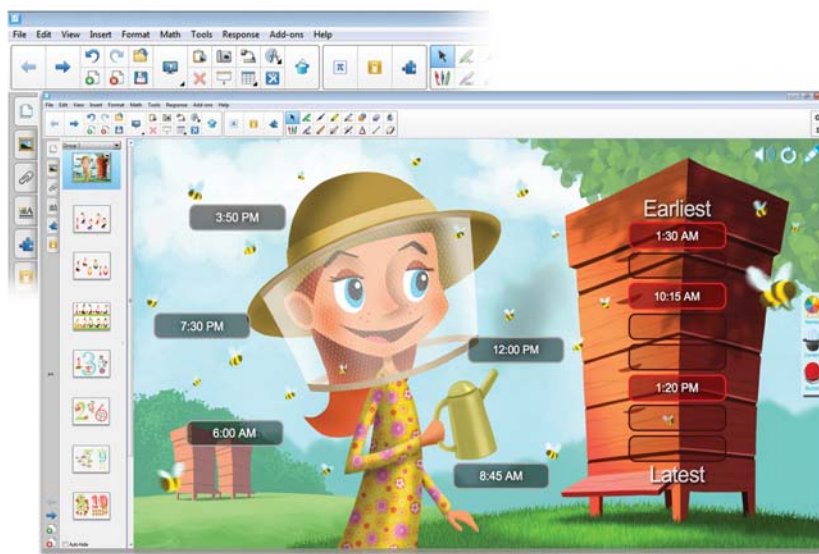


2.6kg
 1080p output resolution
 2 megapixels with 30 fps
 12 x optical zoom
 HDMI digital connectivity

SMART Notebook®

collaborative learning software

A SMART Notebook® software license is included with every Epson education interactive projector*. Fully compatible with interactive pen of Epson interactive projector, the SMART Notebook® allows educators to easily create and deliver dynamic interactive learning experiences with rich multimedia contents.

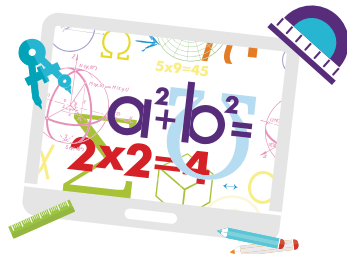


* Only applicable for EB-536Wi.

Features & Benefits

Innovative Math Functionality

Math functionality powered by GeoGebra for all grade levels, including easy equation editing and 55,000+ math content objects and activities for geometry, algebra, calculus and statistics.



Lesson Activity Builder

Use customisable activity templates to quickly build game-based activities that amaze and engage students.



SMART Exchange Website

Access and download more than 60,000 ready-to-use teaching resources including images, videos and 3D models, etc.

One-year Subscription for 4 PCs Included

Every license allows up to 4 PCs to activate and use the software. One-year SMART Notebook Advantage subscription is included to give you access to software updates, SMART technical support and lets you unlock premium features.

With a host of intuitive tools and features to choose from, creating engaging lessons is as easy as 1-2-3.

- Interactive Concept Maps
- Handwriting and shape recognition
- SMART Notebook Recorder
- Language support for English, Chinese, Bahasa Melayu, etc.
- SMART Notebook Maestro (iPad app sold separately)

EPSON REVOLUTIONISES PROJECTOR MARKET WITH 3LCD TECHNOLOGY AND LEADS AS WORLD'S NO.1* PROJECTOR BRAND FOR 14 CONSECUTIVE YEARS!

* Based on independent research by Futuresource Consulting

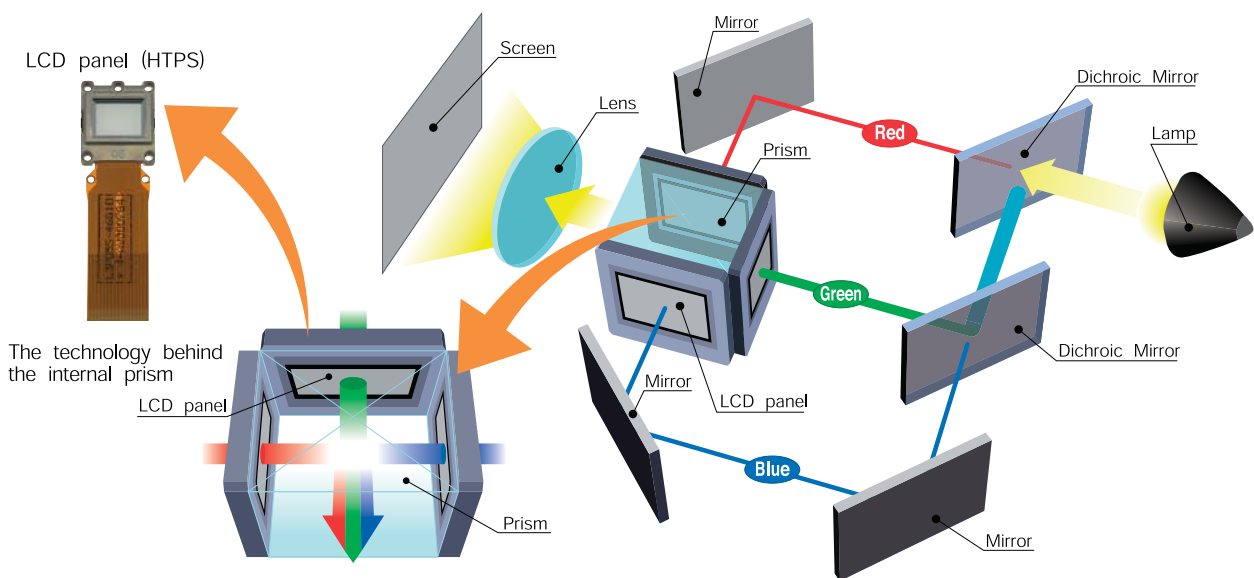
Advantages of 3LCD Projection System

Bright Images and Faithful Colour Reproduction

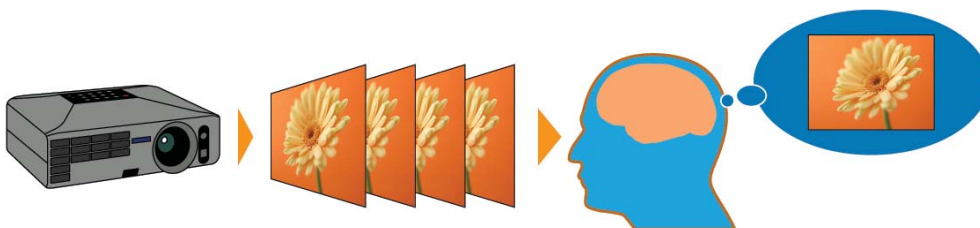
3LCD projectors offer all-time colour (Red, Green and Blue) projection thereby ensuring faithful full colour reproduction. This is suitable for projection of colour intensive images such as videos, photographs and colour charts.

Incredible Details

3LCD projectors are able to produce an unparalleled range of grayscale images, which contributes to delivering incredible colour images that are smooth and seamless.



3LCD projector : RGB are projected at the same time, which makes the single composite image easy on the eyes.



** HTPS (High Temperature Poly-Silicon) is an active matrix transmissive LCD. It is extremely small and produces high-quality images.

Gentle on the Eyes

3LCD projectors' images do not suffer from colour break-up (commonly known as the rainbow effect). The projections are easy on the eyes as you will not be affected by any distorted pattern.

3LCD projectors use 3 separate LCD panels to form a continuous image containing all colours (red, blue and green) ensuring smooth video playback, even for rapid-motion images.

Reliable Technology

With more than 70 million 3LCD chips shipped to date, the powerful and road-tested 3LCD projection technology is extremely reliable, and is trusted by many throughout to deliver sharp and true-to-life images.

SEE VIBRANT, REALISTIC COLOURS WITH HIGH COLOUR BRIGHTNESS.

9 out of **10** PEOPLE PREFER IMAGES FROM **EPSON PROJECTORS**

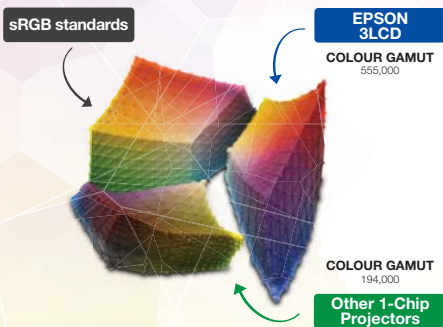
*Based on a third-party study made by Radius Global Market Research of nearly 900 participants in the US

See colours like never before. Epson 3LCD projectors deliver brilliant colours that match its white brightness to give you balanced, realistic, and vibrant images. It's no wonder Epson projectors are the people's preferred choice.

UP TO **3X** WIDER COLOUR GAMUT. Epson Projectors

Up to 3X Wider Colour Gamut

Colour gamut refers to the range of colours that can be reproduced by a display device – the wider the gamut, the more realistic it is. Epson 3LCD projectors project three times wider gamut that matches closely to the original standard of a display device (sRGB), as compared to 1-chip projectors.

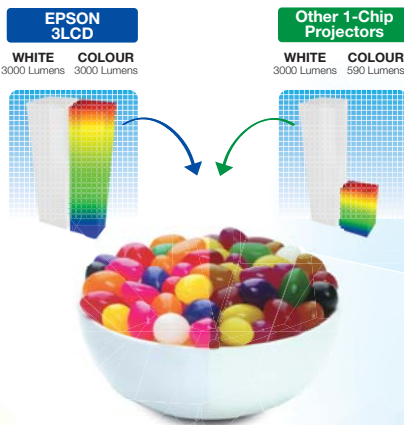


Comparing the yellow corners among the three gamuts, 1-chip projectors have a distinctly darker and smaller set of colours which are not as vibrant as Epson 3LCD projectors.

Up to **3x** Brighter Colours with Epson Projectors

Up to 3X Brighter Colours

Epson 3LCD projectors deliver up to three times the colour brightness, effortlessly creating the same colour and white brightness, resulting in faithful images with superior colour balance.



NO RAINBOW EFFECT

No Rainbow Effect

With 1-chip projectors, the spinning motion of the sequential colour wheels tend to cause colours to break out into distinct red, green and blue. Called the rainbow effect, this may cause users to suffer headaches with prolonged viewing. Epson projectors do not give out this effect, giving users a comfortable experience.



MODEL NUMBER	EB-536Wi	EB-535W	EB-525W
Projection Technology	RGB liquid crystal shutter projection system (3LCD)		
Specifications of Main Parts			
LCD	Size	0.59" with MLA (D8)	
	Native Resolution	WXGA	
	Type	No Optical Zoom / Focus (Manual)	
	F-Number	1.60	
	Focal Length	6.4mm	
Projection Lens	Zoom Ratio	1.0 - 1.35 (Digital Zoom)	
	Throw Ratio	0.48 - 0.65 (Wide - Tele)	
	Type	215W UHE	
Lamp	Life (Normal / Eco) ¹	5,000 hours / 10,000 hours	
	Life (Normal / Eco) ¹	200W UHE	
Screen Size (Projected Distance)			
Zoom: Wide / Zoom: Tele	53" - 116" [0.54 - 1.22 m] / 39" - 86" [0.54 - 1.22 m]		
Brightness²			
White Light Output (Normal / Eco)	3,400lm / 1,900lm		2,800lm / 1,700lm
Colour Light Output (Normal)	3,400lm		2,800lm
Contrast Ratio	16,000:1		
Internal Speaker(s)			
Sound Output	16W Monaural		
Keystone Correction			
Vertical / Horizontal	±7° / ±5°	±15° / ±15°	
Auto Keystone Correction	Yes (Vertical)	N/A	
Connectivity			
Analog RGB Input	D-Sub 15Pin	2 (Blue)	
	Composite	RCA x 1 (Yellow)	
	S-Video	1	
Digital Input	HDMI	1	
Audio Input	RCA (White/Red)	Yes	
	Stereo Mini Jack	2	
USB Input	USB Type A	1 (for USB Memory, USB Document Camera, Wireless LAN, Firmware Update, Copy OSD Settings)	
	USB Type B	1 (for USB Display, Mouse, K/B, Control, Firmware Update, Interactive, Copy OSD Settings)	1 (for USB Display, Mouse, K/B, Control, Firmware Update, Copy OSD Settings)
Control I/O	RS-232C	D-Sub 9pin x 1	
	Interactive Sync	In x 1; Out x 1	N/A
Video Output	Monitor Out	1	
Audio Output	Stereo Mini Jack	1	
Mic Input	Stereo Mini Jack	1	
Network	Wired LAN	RJ45 x 1 (100Mbps)	
	Wireless LAN	Optional (ELPAP07)	
Interactive Specification			
Interactive Unit			
Supported Screen Size	53" - 116" [0.54 - 1.22 m] (Zoom: Wide) 40" - 86" [0.54 - 1.22 m] (Zoom: Tele)	N/A	
Technology	Infrared	N/A	
Input Devices	Digital Pen (Easy Interactive Pen A and B)	N/A	
Connection to Computer	USB	N/A	
Supports Multiple Input Simultaneously	Yes	N/A	
Calibration	Auto, Manual (25 Points)	N/A	
Pen Unit			
Size	161 x 24 mm Dia. (maximum)	N/A	
Weight (Excluding Batteries)	30g	N/A	
Side Button	Yes	N/A	
PC Free Annotation Tool			
Driver Install	No Need	N/A	
Multi Pen Support	Yes Up To 2 Types Of Pens (Easy Interactive Pen A and B)	N/A	
Whiteboard Function	Yes	N/A	
Operating Temperature	5 - 35 °C <41 - 95 °F>		
Operating Altitude	0 - 3,000 m <0 - 9,843 ft>		
Direct Power On / Off	Yes		
Start-Up Period	Less than 7 seconds, Warm-up period: 30 seconds		
Cool Down Period	Instant Off		
Power Supply Voltage	100 - 240 V AC ±10%, 50/60 Hz		
Power Consumption (220 - 240V)			
Lamp On (Normal / Eco)	298W / 221W		278W / 219W
Standby (Normal / Eco)	2.1W / 0.28W		
Dimension Excluding Feet (D X W X H)	314.5 x 344 x 94 mm		
Weight	3.9kg	3.7kg	
Fan Noise (Normal / Eco)	37dB / 29dB		35dB / 28dB

Supplied Accessories

Power Cable: 4.5m
Remote Control: Yes, with Alkaline AA Battery
Computer Cable (VGA Cable): 1.8 m (EB-535W/EB-525W)
Interactive Pen x 1 (EB-536Wi)
USB cable: 5m (EB-536Wi)
Software CD-ROM

Optional Accessories

Spare Lamp: ELPLP87
Air Filter: ELPAF47
Soft Carrying Case: ELPKS66
Wireless LAN Unit: ELPAP07
Quick Wireless Connection USB Key: ELPAP09
ELPKC28 Interactive IR Synchronization (EB-536Wi)
ELPKC31 USB Extension Cable
ELPPE02 Pen Extension (EB-536Wi)
ELPMB45 Short Throw Wall Mount

EB-536Wi



EB-535W / EB-525W



¹ Lamp life will vary depending upon mode selected, environmental conditions and usage. Lamp brightness decreases over time.
² Colour brightness (colour light output) and white brightness (white light output) will vary depending on usage conditions. Colour light output measured in accordance with IDMS 15:4; white light output measured in accordance with ISO 21118.

©2016 Epson Singapore Pte Ltd. All Rights Reserved. Reproduction in part or in whole, without the written permission from Epson, is strictly prohibited.

EPSON and EXCEED YOUR VISION are registered trademarks of Seiko Epson Corporation.

All other product names and other company names used herein are for identification purposes only and are the trademarks or registered trademarks of their respective owners.

Epson disclaims any and all rights in those marks. Projected images shown herein are simulations. The actual product design and contents may vary. Specifications are subject to change without notice and may vary between countries. Please check with local Epson offices for more information.

Apple, iPad and iPhone are trademarks of Apple Inc., registered in the U.S. and other countries. App Store is a service mark of Apple Inc.

Android is a trademark of Google Inc.

MODEL NUMBER	EB-530	EB-520
Projection Technology	RGB liquid crystal shutter projection system (3LCD)	
Specifications of Main Parts		
LCD	Size	0.55" with MLA (D8)
	Native Resolution	XGA
Projection Lens	Type	No Optical Zoom / Focus (Manual)
	F-Number	1.60
	Focal Length	6.4mm
	Zoom Ratio	1.0 - 1.35 (Digital Zoom)
Lamp	Throw Ratio	0.55 - 0.74 (Wide - Tele)
	Type	215W UHE
	Life (Normal / Eco) ¹	5,000 hours / 10,000 hours
Screen Size (Projected Distance)		
Zoom: Wide / Zoom: Tele	50" - 108" [0.54 - 1.22 m] / 37" - 80" [0.54 - 1.22 m]	
Brightness²		
White Light Output (Normal / Eco)	3,200lm / 1,800lm	2,700lm / 1,600lm
Colour Light Output (Normal)	3,200lm	2,700lm
Contrast Ratio	16,000:1	
Internal Speaker(s)		
Sound Output	16W Monaural	
Keystone Correction		
Vertical / Horizontal	±15° / ±15°	
Connectivity		
Analog RGB Input	D-Sub 15Pin	2 (Blue)
	Composite	RCA x 1 (Yellow)
	S-Video	1
Digital Input	HDMI	1
Audio Input	RCA (White/Red)	Yes
	Stereo Mini Jack	2
USB Input	USB Type A	1 (for USB Memory, USB Document Camera, Wireless LAN, Firmware Update, Copy OSD Settings)
	USB Type B	1 (for USB Display, Mouse, K/B, Control, Firmware Update, Copy OSD Settings)
Control I/O	RS-232C	D-Sub 9pin x 1
Video Output	Monitor Out	1
Audio Output	Stereo Mini Jack	1
Mic Input	Stereo Mini Jack	1
Network	Wired LAN	RJ45 x 1 (100Mbps)
	Wireless LAN	Optional (ELPAP07)
Operating Temperature	5 - 35 °C <41 - 95 °F>	
Operating Altitude	0 - 3,000 m <0 - 9,843 ft>	
Direct Power On / Off	Yes	
Start-Up Period	Less than 7 seconds, Warm-up period: 30 seconds	
Cool Down Period	Instant Off	
Power Supply Voltage	100 - 240 V AC ±10%, 50/60 Hz	
Power Consumption (220 - 240V)		
Lamp On (Normal / Eco)	298W / 221W	278W / 219W
Standby (Normal / Eco)	2.1W / 0.28W	
Dimension Excluding Feet (D X W X H)	314.5 x 344 x 94 mm	
Weight	3.7kg	
Fan Noise (Normal / Eco)	37dB / 29dB	35 dB / 28 dB

Supplied Accessories

Power Cable: 4.5m
Remote Control: Yes, with Alkaline AA Battery
Computer Cable (VGA Cable): 1.8 m
Software CD-ROM

Optional Accessories

Spare Lamp: ELPLP87
Air Filter: ELPAF47
Soft Carrying Case: ELPKS66
Wireless LAN Unit: ELPAP07
Quick Wireless Connection USB Key: ELPAP09
ELPMB45 Short Throw Wall Mount

EB-530W / EB-520W



¹ Lamp life will vary depending upon mode selected, environmental conditions and usage. Lamp brightness decreases over time.
² Colour brightness (colour light output) and white brightness (white light output) will vary depending on usage conditions. Colour light output measured in accordance with IDMS 15:4; white light output measured in accordance with ISO 21118.

©2016 Epson Singapore Pte Ltd. All Rights Reserved. Reproduction in part or in whole, without the written permission from Epson, is strictly prohibited.

EPSON and EXCEED YOUR VISION are registered trademarks of Seiko Epson Corporation.

All other product names and other company names used herein are for identification purposes only and are the trademarks or registered trademarks of their respective owners.

Epson disclaims any and all rights in those marks. Projected images shown herein are simulations. The actual product design and contents may vary. Specifications are subject to change without notice and may vary between countries. Please check with local Epson offices for more information.

Apple, iPad and iPhone are trademarks of Apple Inc., registered in the U.S. and other countries. App Store is a service mark of Apple Inc.

Android is a trademark of Google Inc.

Information correct as at March 2016

PROTECT YOUR PROJECTOR. USE GENUINE LAMPS.



Don't compromise on safety – use Epson genuine lamps to avoid damaging your projector. Eliminate the risk of melting parts of your projector, as well as breaks that result in high-voltage shutdown. With a 0% failure rate even after 2,000 hours of usage – compared to 70% in non-genuine lamps – Epson genuine lamps are safer and more reliable. Choose the best possible viewing experience filled with long-lasting sharpness and colour in every projected image with Epson.



GENUINE EPSON LABEL

To ensure the best quality and safety when using your Epson Projector, look for the “Genuine EPSON Colour Shifting Label” on your projector lamp. Real quality and value, only with Epson genuine supplies.

DANGERS OF NON-GENUINE LAMPS



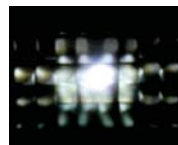
UNRELIABLE

Counterfeit lamps deteriorate and break much faster than genuine ones.



UNSAFE

Parts of your Epson projector such as the housing or wires may melt, disconnect, or become damaged when using non-genuine lamps.



POOR IMAGE QUALITY

Counterfeit lamps may result in inaccurate colour projection, lower brightness levels, as well as flickering images that spoil your viewing experience.