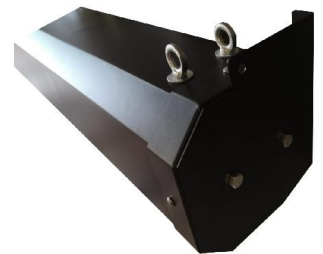
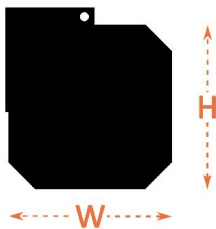
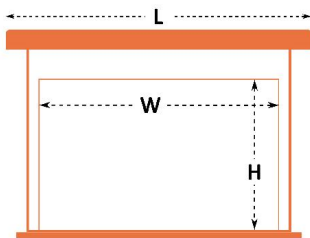


MOTORIZED PROJECTION SCREEN

MR SERIES-LARGE SIZE SCREEN

MODEL	CASE DIMENSIONS	SCREEN WEIGHT App Weight(kgs)	MOTOR	FABRIC
430(14'x14')	210x4520	78.00	TUBULAR 50NM 12R/Min	MATT WHITE
480(16'x16')	210x5060	88.00		THICKNESS:0.65mm
550(18'x18')	210x5740	104.00		GAIN:1.10
600(20'x20')	210x6260	116.00		VIEWING ANGLE:100 degree

SCREEN VIEWING AREA AND CASING DIMENSION



MOTORIZED MR SERIES

- Perfect for multi-function space such as meeting rooms, classrooms and large various use.
- Design for ceiling installations and easy setup to ceiling.
- Square-sturdy steel slat construction with Black paint finish.
- Screen material use matte white fiberglass fabric.
- All design with Black Border on two sides.
- Come with power supply cable (220v – 240v), wall switch control and wireless remote RF.
- Use *turbulent motor-in roller* mode.